



Wir leben Autos.



The new Opel Astra  
Product Information



## The new Opel Astra: A major step forward

The new Astra is set to revitalize the market presence of Opel in the Car C segment. Sporty coupé-like profile with the functionality of a 5-door hatchback, increased roominess, improved quality in construction and materials, excellent interior design, equipment, and finish are immediately apparent. Together with reduced noise, vibration and harshness and a wide range of powertrain choices, this all adds up to give overwhelming segment appeal.

In terms of ride and handling, improved structural rigidity, and a sophisticated compound crank with Watt's link rear suspension, the Opel Astra offers state-of-the-art technology. FlexRide is available on 1.4 Enjoy Plus model, increasing both driving dynamics and safety, and allowing a high degree of driver personalization.

A wide range of Opel Astra ECOTEC<sup>®</sup> engines that are leaner and greener, deliver effective performance with competitive consumption. Easy-shifting 5- and 6-speed manual transmissions add performance driver appeal.

In order to offer a choice of colour, trim and equipment configurations, the new Opel Astra carries over the proven customer appeal of three trim levels, namely Essentia, Enjoy and Sport. Looked at from an overall viewpoint, the mixture of high standard equipment levels together with a choice of options add a degree of model flexibility that few rivals in the segment can offer.

# The new Opel Astra: Front View



The new Opel Astra's styling is self-confident, flowing, and impressive, conveying the design ideal of "sculptural artistry meets German precision".

The frontal styling has an immediate impact and appeal that characterizes the Opel brand. The wide stance gives an impression both of sturdiness and sporting capability, as does the integrated style of the lights, grille, and front bumper. In short, the Opel Astra is a car styled to impress at first sight and go on doing so over its lifetime.

Clever engineering links in harmony with the appealing design to provide outstanding performance in low impact collisions, rewarded in Germany by having the lowest insurance classifications in class due to minimized repair costs.

Other detail highlights:

- "Wing"-style LED daytime running lights
- Slim, sharp eagle eye-like headlamp clusters
- Flowing lines and seamless hood to A-pillar treatment

## Arguments

- New dynamic Opel design language
- Wide stance emphasis stability
- Sporty but not aggressive
- Distinctive "wing" light signature
- Repair-friendly construction

# The new Opel Astra: Side View



## Sporty coupé-like styling

Although it is a full 5-seater with all the spaciousness and functionality of a 5-door hatchback, the overall proportions of the new Opel Astra gives it a distinctive, flowing coupé silhouette.

The dynamically rising waistline unifies the fluidity, whilst the side window profile, with triangular elements, front and rear, conveys a sporting element. The chrome window surround adds another premium touch.

Below it, the inverted blade element further conveys the dynamic family resemblance.

The wheel arches are pronounced and sculpted, emphasizing the long wheelbase. Appealing alloy wheels further accentuate the sportiness.

Another detail that will not be lost on more discerning customers, are the flush-fitting components and narrow gap lines. This immediately conveys a more focused approach to manufacturing precision.



### Arguments

- Flowing good proportions
- Coupé-like style with 5-door hatchback spaciousness & flexibility
- Excellent aerodynamics

## The new Opel Astra: Rear View



### Arguments

- Powerful statement of self-confidence
- Highly stylish with unique signature lights
- Wide, powerful stance
- High-quality design elements

From the rear, the impressive proportions that characterize the Opel Astra are immediately apparent. The powerful broad shouldered stance is emphasized by the falling roof line, a feature that also contributes to the coupé-like profile. The design of the rear light clusters means that they are a logical counter-weight to the front clusters, and very much part of the unique “wing” signature of the car. They also emphasize the neat and rounded way that the waistline flows into the overall rear styling.

The “V” graphic is a family feature of modern Opel design language. Here it descends from the roof line right to the bottom of the indent for the rear registration plate, emphasized by the sculpted nature of the rear sill/upper rear bumper.

The broad track and coupé-like styling is further emphasized by the wrap-around rear screen. This is a logical continuance of the side window treatment that gives a feeling of spaciousness both inside and outside the vehicle.

Below the rear screen, the Opel logo is moulded into the overall contours of the rear hatch. The overall effect is of substance, stability and strength.

# The new Opel Astra: Cockpit

The interior design of the new Opel Astra harmonizes convincingly with the bold and modern exterior. The first impression for the driver is of well-organized comfort. The 4-way adjustable seat is comfortable but supportive, and everything is within easy reach. Both this and the 6-way adjustable ergonomic sports seat (available in the 1.6T Sport) have increased travel both in height and length for maximum comfort in positioning and legroom. The steering wheel can be adjusted for reach and rake. The gear lever is short, sporty, and ergonomically shaped for the hand. Together these features add up to give an impression of quality and control.

The instruments are housed in pods, and the main dials are angled inward towards the driver, emphasizing the driver-focused feeling. New attention to detail includes the high quality feel of the steering wheel and steering wheel controls and the whole impact of higher quality materials throughout the cockpit.

The centre stack, mounted at a user-friendly 30-degree angle, houses the main display, infotainment, air controls, and centre vents. All are easily reachable and intuitively easy to use. The driver's convenience is maximized by details such as outstanding storage possibilities within easy reach, including a special driver's storage bin.



## The new Opel Astra: Interior



Friendly, stylish, and functional  
The new Opel Astra keeps the comfort of all passengers in mind. The longer wheelbase and wider track have translated into a feeling of generous roominess. The interior also offers a new sense of high quality and friendliness to maximize this increased spaciousness. Soft curves and surfaces which overlap rather than meet at a dividing point form a welcoming environment. Quality and tactility have also played a dominant role in the choice of fabrics at all trim levels.

Another up-market touch that further reinforces the welcoming nature is that much attention has been paid to the ambient interior lighting. At night red diffused light illuminates the base of the centre stack and the door panels.

In the rear, the generous leg- and shoulder-room, improved deep-sculptured rear seats, and practical storages for items and drinks make the passengers instantly feel at home.

Overall, the interior is one of the most effective “first impression” sales factors with the new Opel Astra.



### Arguments

- Quality design, feel, and finish
- High levels of equipment at all trim levels
- Sophisticated, red diffused ambient interior lighting

# The new Opel Astra: Safety



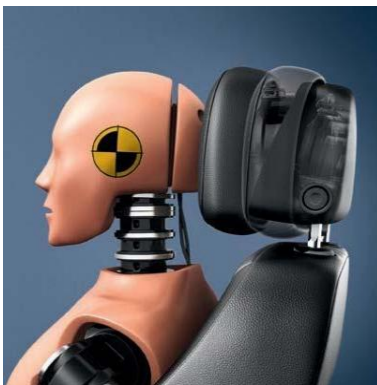
## Safety Structure

The highly rigid, computer-designed and optimized body structure utilizes high-strength steel grades, defined load paths and deformation zones to enable a high level of passive safety performance. The safety cell of the new Opel Astra offers one of the largest crash protection survival spaces in this class. In high-speed front impacts, the energy is distributed along three controlled load paths including the front sub-frame. In side-impact events, the diagonally mounted door beams effectively transfer load into ultra high strength steel B pillars, side sills, and floor cross-members.



## Restraint Systems

The passenger front and side airbags can be deactivated when a child seat is used on the front seat. The standard thorax and pelvis side airbags guard against both side impact and intrusion. In the rear compartment, the full-length curtain airbags provide protection. The new Opel Astra also features an advanced front seat-belt system. Dual seatbelt pretensioners and load limiters allow maximum restraint of the pelvis and control of upper body movement to ensure the optimal position in interaction with the front airbags.



## Active Headrests

The active front headrests move up and forward under impact to guard against whiplash and other head and upper body injuries.



## Low Speed Concept

The new Opel Astra is the first car in its class designed to meet the new bumper design guidelines from Research Council of Automobile Repairs (RCAR), an international association for insurance industry research. The aluminium bumper beam sections and crash boxes are strategically positioned to avoid override/ underide events in low speed crash impacts. This results in reduced damage and helps to save repair costs. In addition, the new Opel Astra has special radiator and headlamp mountings to avoid the need to replace expensive components in low speed impacts.

## ISOFIX

The Opel DUO ISOFIX child seat system safely carries children from 9 – 18 kg, is easily fixed using a standard 3-point point safety belt or the pre-fitted ISOFIX mountings on the rear outer seats.

## Arguments

- High-strength safety cell
- Optimised restraint system
- Intelligent low speed impact system and repair concept

# The new Opel Astra: Chassis



## Compound crank with Watt's link rear suspension

The unique rear suspension is a compound crank axle with Watt's linkage. While the principle of Watt's linkage has been known for over 200 years, more recently it has been used mostly in race cars. In effect, the principle is straightforward. A steel cross-member just behind the wheel centre line carries the two struts of the linkage. These are pivoted in the middle and the ends attached to the lower wheel carriers.

The result is that any lateral impact on one side is immensely compensated by an equal amount of force on the other side, increasing stability.

The major benefit of this compact system effectively prevents any lateral movement of the axle, providing a smoother ride and improving handling.

## Chassis

Improved ride comfort, driving dynamics, and steering response, with reduced noise and vibrations are the main benefits gained from the new Opel Astra chassis. In comparison with the previous Astra the front tread has been increased by 56 mm and the rear by 70 mm. This gives a wider footprint, which helps maximize the handling and stability improvements gained from the new suspension. A further ride refinement is that the wheelbase has gained 71 mm in comparison to the previous model. An increase in torsional stiffness of 43 % and in bending stiffness of 10 % provides a solid platform for the suspension, and contributes towards significant reduction in noise, vibrations, and harshness.

## Electronic Stability Program ESP<sup>®</sup>Plus

The introduction of ESP<sup>®</sup>Plus was one of the most important innovations to improve safety on the road. The new Opel Astra's ESP<sup>®</sup>Plus is of the latest generation. It reacts almost imperceptibly for the driver, but is very effective to stabilize the car in emergency situations.

Other advanced chassis features are:

- Traction Control (TC)
- Cornering Break Control (CBC) and Cornering Torque Control (CTC) – both systems increase stability during braking, respectively accelerating in curves
- Brake Assist
- Hydraulic Brake Fade Assist
- Brake Disc Cleaning
- Trailer Stability Program

## Arguments

- Innovative rear suspension
- Precise handling and excellent road handling

# The new Opel Astra: Colours



Olympic White



Black Sapphire



Technical Grey



Power Red



Waterworld blue



Silver Lake

## Wheels & Tyres



For Astra 1.6 Essentia  
17 x 7.0, multi-spoke  
215 (50) R17



For Astra 1.4T Enjoy/ Enjoy PLUS  
17 x 7.0, 5-spoke  
215 (50) R17



For Astra 1.6T Sport  
18 x 8.0, 5-spoke  
235 (45) R18

# The new Opel Astra:

## Specifications

DIMENSIONS	1.6 Essentia	1.4 T Enjoy	1.4 T Enjoy Plus	1.6 T Sport
Length (mm)	4419	4419	4419	4419
Width (mm)	1814	1814	1814	1814
Height (mm)	1510	1510	1510	1510
Wheelbase (mm)	2685	2685	2685	2685
Track Front/Rear (mm)	1544/1558	1544/1558	1544/1558	1544/1558
ENGINE	1.6 Essentia	1.4 T Enjoy	1.4 T Enjoy Plus	1.6 T Sport
Cylinders	4	4	4	4
Bore (mm)	79	72.5	72.5	79.0
Stroke (mm)	81.5	82.6	82.6	81.5
Displacement (cc)	1598	1364	1364	1598
Power - kW @ r/min	85kW@6000	103kW@4900	103kW @ 4900	132kW@5500
Torque - Nm @ r/min	155Nm @ 4000	200Nm @ 1850 - 4900	200Nm @ 1850 - 4900	230Nm@2200-5400
Compression Ratio	10.8:1	9.5:1	9.5:1	8.8:1
TRANSMISSION	1.6 Essentia	1.4 T Enjoy	1.4 T Enjoy Plus	1.6 T Sport
Transmission	5SPD M/T	6SPD M/T	6SPD M/T	6SPD M/T
FUEL CONSUMPTION	1.6 Essentia	1.4 T Enjoy	1.4 T Enjoy Plus	1.6 T Sport
Urban (l/100km)	8.3	7.9	7.9	8.8
Extra urban (l/100km)	5.1	4.7	4.7	5.6
Combined (l/100km)	6.3	5.9	5.9	6.8
CO2 Emissions (g/km)	147	138	138	159
FUEL	1.6 Essentia	1.4 T Enjoy	1.4 T Enjoy Plus	1.6 T Sport
Type	Petrol	Petrol	Petrol	Petrol
Tank capacity (L)	56	56	56	56
WHEELS AND TYRES	1.6 Essentia	1.4 T Enjoy	1.4 T Enjoy Plus	1.6 T Sport
Rim Size (Alloy)	17 x 7.0, multi-spoke	17 x 7.0, 5-spoke	17 x 7.0, 5-spoke	18 x 8.0, 5-spoke
Tyre Size	215/50 R17	215/50 R17	215/50 R17	235/45 R18
CHASSIS	1.6 Essentia	1.4 T Enjoy	1.4 T Enjoy Plus	1.6 T Sport
Front Suspension	McPherson Strut	McPherson Strut	McPherson Strut	McPherson Strut
Rear Suspension	Compound Crank Axle	Compound Crank Axle	Compound Crank Axle	Compound Crank Axle
Electronic Stability Program (ESP)	▪	▪	▪	▪
Sport Chassis - Lowered			▪	▪
Flex Ride *			▪	

# The new Opel Astra: Specifications

BRAKES	1.6 Essentia	1.4 T Enjoy	1.4 T Enjoy Plus	1.6 T Sport
Front & Rear Discs	15"	15"	15"	16"
ABS	▪	▪	▪	▪
Electronic Brake-Force Distribution (EBD)	▪	▪	▪	▪
STEERING	1.6 Essentia	1.4 T Enjoy	1.4 T Enjoy Plus	1.6 T Sport
Power Steering	▪	▪	▪	▪
Steering Wheel	3-spoke	3-spoke	3-spoke	3-spoke
Steering Wheel Leather		▪	▪	sport
Steering Wheel – Radio Controls	▪	▪	▪	▪
Steering Wheel - Height & Reach Adj	▪	▪	▪	▪
Lock Control - Steering Column	▪	▪	▪	▪
Cruise Control	▪	▪	▪	▪
EXTERIOR APPEARANCE	1.6 Essentia	1.4 T Enjoy	1.4 T Enjoy Plus	1.6 T Sport
Headlamps	Halogen	Halogen	Bi-Xenon	Halogen
Colour Coded Door Handles	▪	▪	▪	▪
Colour Coded Bumpers	▪	▪	▪	▪
Colour Coded Mirror Housing	▪	▪	▪	▪
Molding Belt Line	Black	Black	Black	Chrome
Power & Heated Mirrors	▪	▪	▪	▪
Rear Roof Spoiler	▪	▪	▪	▪
LAMPS	1.6 Essentia	1.4 T Enjoy	1.4 T Enjoy Plus	1.6 T Sport
Front Fog Lamps		▪	▪	▪
Daytime Running Lights (DRL)	▪	▪	▪	▪
Lamp Washer			▪	▪
Automatic Headlight Control			▪	▪
Adaptive Forward Lighting (AFL)			▪	
Control Intelligent High Beam			▪	
Automatic Headlamp Leveling			▪	
SEATING	1.6 Essentia	1.4 T Enjoy	1.4 T Enjoy Plus	1.6 T Sport
Active Headrests	▪	▪	▪	▪
Height Adjustable Driver Seat	▪	▪	▪	▪
Height Adjustable Passenger Seat	▪	▪	▪	▪
Ergonomic Driver Sport Seat				▪
Power Lumbar, Driver				▪
Heated Front Seats				▪
Split Rear Seats 60/40	▪	▪	▪	▪
Trim	Cloth	Cloth	Cloth	Leather

# The new Opel Astra: Specifications

CONVENIENCE	1.6 Essentia	1.4 T Enjoy	1.4 T Enjoy Plus	1.6 T Sport
Air Conditioner	▪	▪	▪	CLIMATE CONTROL
Power Windows - Front and Rear	▪	▪	▪	▪
Rear Park Assist				▪
Hill Start Assist				▪
Intermittent Wipers	▪	▪	▪	▪
Rain Sensor Wipers			▪	▪
Inside Rear View Mirror - Tilt		▪	▪	
Anti-Dazzle Rear View Mirror			▪	▪
SAFETY	1.6 Essentia	1.4 T Enjoy	1.4 T Enjoy Plus	1.6 T Sport
Airbag Driver Front	▪	▪	▪	▪
Airbag Passenger Front	▪	▪	▪	▪
Airbag Front Seat Side	▪	▪	▪	▪
Curtain Airbag	▪	▪	▪	▪
Airbag Deactivation Switch	▪	▪	▪	▪
ISOFIX Attachments on Outer Rear Seats	▪	▪	▪	▪
Side Impact Bars – All Doors	▪	▪	▪	▪
High-Mounted Stop Lamp	▪	▪	▪	▪
SECURITY	1.6 Essentia	1.4 T Enjoy	1.4 T Enjoy Plus	1.6 T Sport
Car Alarm	▪	▪	▪	▪
Immobilizer	▪	▪	▪	▪
Deadlock System	▪	▪	▪	▪
Vehicle Inclination Sensor	▪	▪	▪	▪
Interior Movement Sensor	▪	▪	▪	▪
Remote Controlled Power Door Locks	▪	▪	▪	▪
INFOTAINMENT	1.6 Essentia	1.4 T Enjoy	1.4 T Enjoy Plus	1.6 T Sport
Radio / CD	▪	▪	▪	▪
MP3 Compatible	▪	▪	▪	▪
Auxiliary Input	▪	▪	▪	▪
No. of Speakers	4	7	7	7
Information Display	Triple	Graphic	Graphic	Graphic
INFORMATION	1.6 Essentia	1.4 T Enjoy	1.4 T Enjoy Plus	1.6 T Sport
On Board Computer	▪	▪	▪	▪
Graphic Information Display		▪	▪	▪
WARRANTY & SERVICE	1.6 Essentia	1.4 T Enjoy	1.4 T Enjoy Plus	1.6 T Sport
Warranty & Roadside Assistance	5yr/120 000km	5yr/120 000km	5yr/120 000km	5yr/120 000km
Anti-Corrosion Warranty	5yr/Unlimited km	5yr/Unlimited km	5yr/Unlimited km	5yr/Unlimited km
Service intervals	1yr/15 000km	1yr/15 000km	1yr/15 000km	1yr/15 000km
Service Plan	5yr/90 000km	5yr/90 000km	5yr/90 000km	5yr/90 000km

Disclaimer: Specifications are subject to change without notice. While due caution has been exercised in the production of this document possible errors and omissions are unintentional.

# The new Opel Astra:

## \*Enjoy PLUS – Special Features



### FlexRide Chassis with Drive Mode Control (DMC)

FlexRide is the integrated, fully adaptive chassis control system of the new Opel Astra that significantly enhances the ride and handling performance and the safety of the vehicle. The electronic brain behind FlexRide is the Drive Mode Control (DMC) module.

Using vehicle dynamics information, DMS constantly monitors 11 different driving situations, including acceleration, braking, and cornering, to optimize the behaviour of the chassis.

DMC also reads the chosen FlexRide mode selected by the driver with the "Sport" and "Tour" buttons. DMC recognises if the driver is driving normally or sporty and reacts accordingly.

### Continuous Damping Control (CDC)

An important component of the FlexRide system is the Continuous Damping Control (CDC). CDC uses electronic sensors to constantly monitor and control the suspension for optimum stability, driving satisfaction, and comfort. This happens 100 times per second, translating into intervals of only 30 cm at a speed of 100 km/h. Based on this information, the adaptive damping system constantly optimizes the body control by changing the damping force within a characteristic map instead of a fixed characteristic.

Information of a braking situation will be analyzed leading to an adjustment of the dampers, avoiding an excessive pitch of the body to a more comfortable braking behaviour.

A fast steering manoeuvre of the car will be detected via a change of the steering angle, and the damping will be changed to a firmer characteristic. Roll of the car is thereby limited, giving the customer a more pleasant safety feeling.



### Adaptive Forward Lighting (AFL)

Controlled by speed, steering input and electronics, Opel Astra's advanced AFL system automatically selects from nine different headlight patterns, each designed to provide optimum illumination, without dazzling other drivers.

The benefit: less stress, more safety.

Headlight patterns:

- LED Daytime Running Light
- Pedestrian Area Light
- Town Light
- Country Road Light
- Highway Light
- Adverse Weather Light
- High Beam with Assist
- Dynamic Curve Light
- Static Cornering Light



Pedestrian Area Light



Dynamic Curve Light

